

Trend Micro

# CENTRALIZED VISIBILITY AND CONTROL

Delivered by Trend Micro™ Control Manager™ for on-premises and Trend Micro™ Apex Central™ as a service for SaaS deployments

In today's sophisticated threat landscape, advanced attacks leverage multiple threat vectors, crossing user endpoints, servers, networks, web, and email. You need to visibility across multiple layers of security to ensure the best possible protection for your organization. And with the transition to cloud-based IT delivery models, you need to manage security across on-premises, cloud, and hybrid deployment environments.

Consistent security management will help you bridge the IT silos that often separate layers of protection and deployment models. This type of centralized approach improves visibility, reduces complexity, and eliminates redundant and repetitive tasks in security administration—all of which make your organization better protected, and your life easier.

This centralized visibility and management solution provides a single, integrated interface to manage, monitor, and report across multiple layers of security—delivered as a SaaS solution by Apex Central™ as a Service, or as an on-premises solution by Trend Micro™ Control Manager™. Customizable dashboards provide the visibility and situational awareness that equip you to rapidly assess status, identify threats, and respond to incidents. User-based visibility (based on active directory integration) allows you to see what is happening across all endpoints, devices owned by your users, as well as their email and web traffic, enabling you to review policy status and make changes across everything the user touches.

And if you do experience a threat outbreak, you'll have complete visibility across your environment to track how threats have spread. With a better understanding of security events, you're more likely to prevent them from reoccurring. Direct links to the Trend Micro™ Threat Connect™ database deliver actionable threat intelligence, which allows you to explore the complex relationships between malware instances, creators, and deployment methods.

## TREND MICRO PRODUCTS SUPPORTED BY CONTROL MANAGER

- **Hybrid Cloud Security**
- Deep Security
- **Network Defense**
- Deep Discovery Inspector
- Deep Discovery Analyzer
- Deep Discovery email Inspector
- **User Protection**
- OfficeScan™
- Worry-Free™ Business Security
- Endpoint Encryption
- Endpoint Application Control
- Endpoint Sensor
- Security for Mac
- Vulnerability Protection
- Data Loss Prevention
- Mobile Security
- InterScan™ Messaging Security
- ScanMail™
- Hosted Email Security
- Portal Protect
- InterScan™ Web Security
- Cloud App Security

## TREND MICRO™ PRODUCTS SUPPORTED BY APEX CENTRAL™ AS A SERVICE

- **Apex One™ as a Service, featuring:**
  - *Apex One™ as a Service:* Application Control
  - *Apex One™ as a Service:* Vulnerability Protection
  - *Apex One™ as a Service:* DLP (data loss prevention)
- **Apex One™ as a Service**
- **Apex One™ (Mac) as a Service**
- **Apex One™ as a Service: Endpoint Sensor**
- **Apex One™ (Mac) as a Service: Endpoint Sensor**

## KEY ADVANTAGES

### Simple, Enterprise-Wide Visibility

- Feature parity between SaaS (Apex Central™ as a Service) and on premises (Control Manager).
- Continuously monitor and rapidly understand your security posture, identify threats, and respond to incidents with up-to-the-minute situational awareness across your environment. In addition, when an attack makes its way in, you have the ability to investigate where it has spread.
- Intuitive, customizable interface gives you visibility across all security layers and users, and lets you drill down to the specific information you are looking for.
- Security dashboards allow instant triage by giving administrators the ability to prioritize critical threat types, critical users, or critical endpoints, so they can take action on the most pressing issues first.
- Configurable dashboards and reports, ad hoc queries, and alerts give you the actionable information you need to ensure protection and compliance.
- Integration with your security operations center (SOC) is easily achieved through integration with leading SIEM solutions.
- Predefined reporting templates and customizable SQL reporting facilitates compliance with internal IT audit requirements and regulations.

## CONNECTED THREAT DEFENSE FOR BETTER PROTECTION

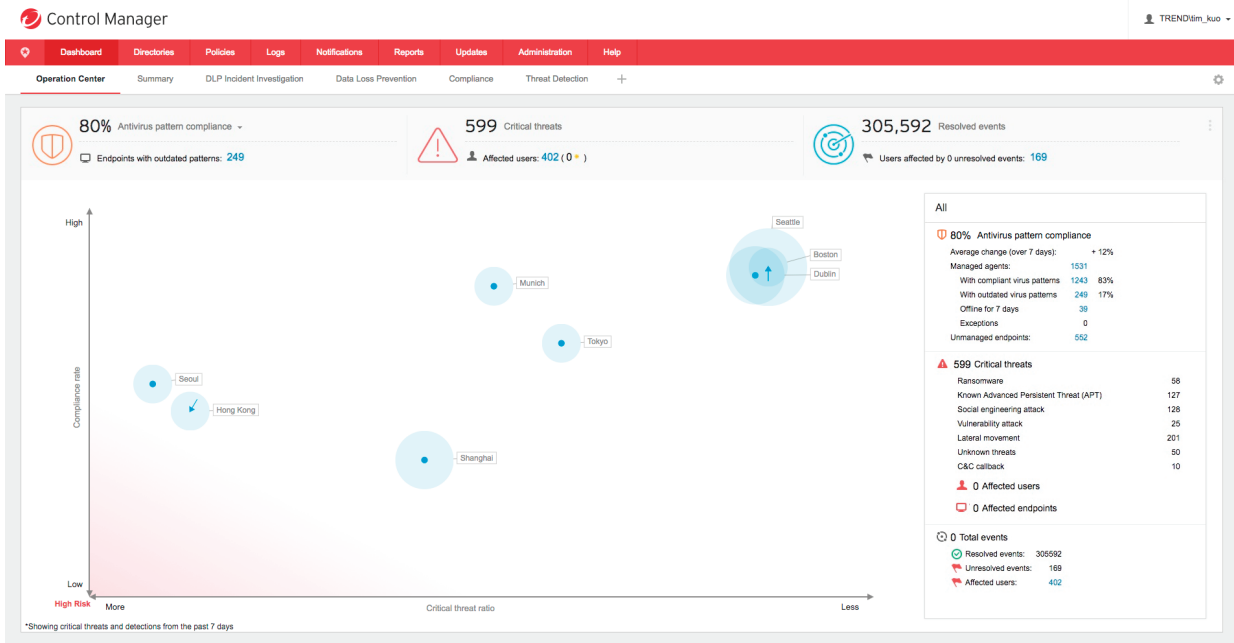
(Available for Trend Micro Control Manager only)

### Superior threat investigation and intelligence

- Comprehensive threat response and investigation enables you to look back in time to identify where a threat has spread in your organization and discover the full context, timeline, and extent of the attack, so that you can rapidly respond to compromises.
- Direct links to our Threat Connect™ database gives you access to actionable global threat intelligence. This includes rich correlated threat data, describing characteristic behaviors like network activities and system modifications, along with global and system and industry-specific impacts.
- The Trend Micro knowledge base provides suggestions for remediation and prevention.

### User-based Visibility

- Multi-layer visibility, whether your security is deployed on premises or in the cloud, gives you a centralized view, so you don't have to hop from console to console.
- Streamlined security administration allows you to manage threat and data protection for endpoint, servers, network, mobility, messaging, collaboration, and web, all through a single consolidated interface.
- Active directory integration simplifies dashboards with correlated data based on the AD site or department.
- User-centric view lets you easily manage security across all device types so that you can deploy and review policy status for any endpoints owned by a given user, whether desktop or mobile.



Security operations dashboards use innovative heat maps (based on active directory sites or departments) to show compliance and critical threats that are most important to IT and security administrators.

## SYSTEM REQUIREMENTS

SERVER HARDWARE REQUIREMENTS	
🕒	Processor: Minimum 2.3 GHz Intel™ Core™ i5 or compatible CPU; AMD™ 64 processor; Intel 64 processor
🕒	Memory: 8 GB RAM minimum
🕒	Available Disk Space: 80 GB minimum (SAS disk type)

SOFTWARE REQUIREMENTS	
<b>Operating System</b>	
🕒	Microsoft™ Windows™ Server 2008 Standard/Enterprise Edition with SP2
🕒	Windows Server 2008 (R2), Standard/Enterprise/Datacenter Edition with SP1
🕒	Windows Server 2012 Standard/Datacenter Edition (64-bit)
🕒	Windows Server 2012 (R2) Standard/Datacenter Edition (64-bit)
🕒	Windows Server 2016 Standard/Datacenter Edition (64-bit)
<b>Web console</b>	
🕒	Processor: 300 Mhz Intel™ Pentium™ processor or equivalent
🕒	RAM: 128 MB minimum
🕒	Available disk space: 30 MB minimum
🕒	Browsers: Microsoft Internet Explorer™ 11, Microsoft Edge™, Google Chrome (Note: When using Internet Explorer or Edge, please turn off "Compatibility View")
🕒	Other: Monitor that supports 1366 x 768 resolution at 256 colors or higher   Adobe™ Flash™ 8 or later
<b>Database Software</b>	
🕒	SQL Server 2008 Express with SP4
🕒	SQL Server 2008 (R2) Standard/Enterprise with SP3
🕒	SQL Server 2008 Standard/Enterprise with SP4
🕒	SQL Server 2012 Express with SP3
🕒	SQL Server 2012 Standard/Enterprise with SP3
🕒	SQL Server 2014 Express with SP2
🕒	SQL Server 2014 Standard/Enterprise with SP2
🕒	SQL Server 2016 Express with/without SP1
🕒	SQL Server 2016 Standard/Enterprise with/without SP1
<b>Virtualization Support</b>	
Control Manager provides support for virtual platforms that are supported by the installed operating system	

### Key Benefits

- Increases visibility with innovative heat maps security operations dashboards.
- Simplifies administration with central console for security and data policies.
- Improves data protection by managing integrated DLP across the IT infrastructure with reusable policy templates.
- Reduces risk with consolidated updates and security alerts and connected threat defense to share information among security layers.
- Lowers security management costs by saving time and reducing IT workload.



Securing Your Connected World

©2018 by Trend Micro Incorporated. All rights reserved. Trend Micro, and the Trend Micro t-ball logo, OfficeScan and Trend Micro Control Manager are trademarks or registered trademarks of Trend Micro Incorporated. All other company and/or product names may be trademarks or registered trademarks of their owners. Information contained in this document is subject to change without notice. [DS00\_Apex\_One\_Central\_181012US]